

Two bands, "The MINOR Jazz Blasts" and "The MAJOR Jazz Blasts" are competing in a Battle of the Bands contest.

Their fans are sitting in major or minor chairs.

1. Draw a line connecting each chair below to the drummer in the correct band.  
Hint: You may try each message on the piano to help you decide.
2. Would you like to play with The Minor Jazz Blasts or The Major Jazz Blasts?



WWHW

The third note of the scale is Eb

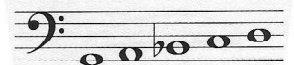
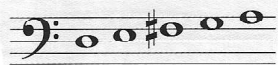
ABCDE

# BATTLE OF THE BANDS



Half step between  
2 and 3

ABC#DE



WHWW



The third note of  
the scale is B.

Half step between  
3 and 4